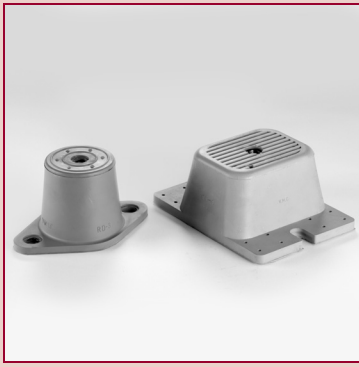


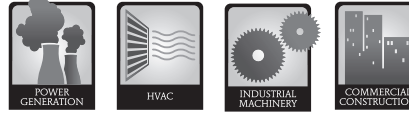
# R/RD SERIES



0.20 - 0.50"  
DEFLECTION  
35 - 4000 LB  
LOAD RANGE

# ELASTOMERIC MOUNTS

## APPLICATIONS



## FLUSH-TYPE MOUNTS

R/RD Series are elastomeric flush-type mounts that provide effective vibration control for all types of general metalworking and production machinery. Typical applications include air handling units, business machines, instrument panels and machine tools.

The R/RD Series have ribbed, non-skid bases and may be installed with or without bolting the mounts to the machinery. No bolting is required under machines that have no lateral or severe vertical motion. The RP/RDP versions offer mounting with a pin for inaccessible bolt holes.

The R/RD Series mounts are embedded in colored elastomer. This color-coding system permits instant identification of loading capacities, and prevents instal-

lation errors. The R Series offer deflections to 1/4" and the RD Series offer deflections to 1/2". Four different sizes offer a load capacity range of 10 to 4000 lbs. per mounting – offering mounts that may be accurately selected for the equipment weight.

The elastomeric coatings resist oils, ozone and most solvents – providing optimum resilience in most conditions. Note that these mounts are not inherently failsafe and are recommended for stationary, vertical loads only.

VMC's weather-resistant compounds are popular with users of the R/RD line and are now a standard offering as R-WR/RD-WR mounts. Color-coded molding is a feature of our WR materials.

## FEATURES & BENEFITS

- Static load range of 35-4000 lbs. offers solutions for a wide range of equipment weights.
- Choice of 0.2" or 0.5" load deflection provides accurate selection of mounts based on equipment requirements.
- Tapped bolt holes permit more secure installation if required.
- Ribbed mounting base provides a non-skid surface – eliminating the need to bolt machinery to the mounts.
- Elastomer-coated mounts are color-coded for easy identification.
- Contact VMC for other engineered rubber compounds.

## APPLICATIONS

- Air handling units
- Compressors, pumps and fans
- Instrument panels
- Machine tools
- Engine gensets
- Transformers
- HVAC equipment

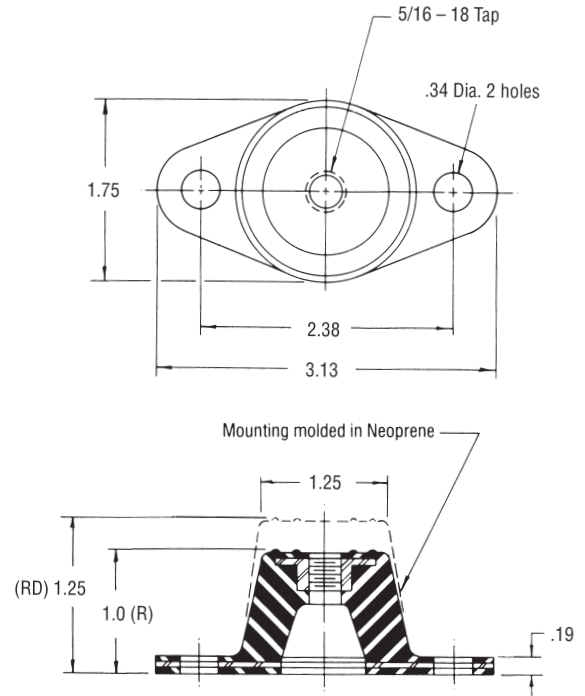
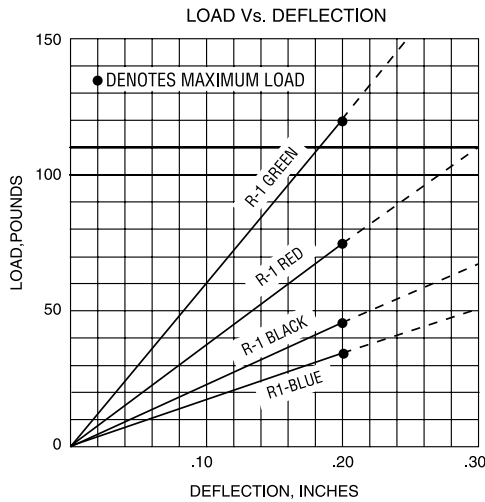
**NOTE:** VMC can mold almost any elastomer into any of its elastomer mount products. Special materials include, but are not limited to, natural rubber, Weather Resistant (WR), High Damped Silicone, Extreme High Temperature (EHT) Silicone, Nitrile and EPDM. Many of these are color coded by hardness.

# ELASTOMERIC MOUNTS

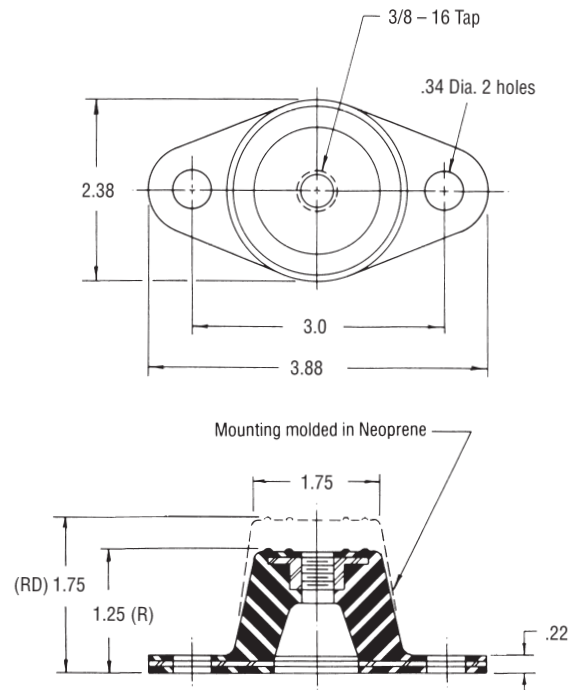
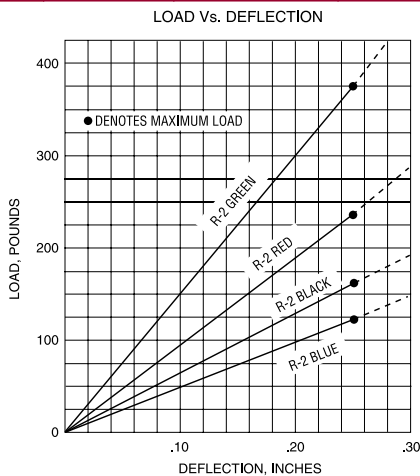
# R/RD SERIES

## TECHNICAL

TYPE R/RD1				
MODEL #	CODE COLOR	MAX LOAD, lbs.	DEFLECTION, ins.	
			R	RD
R/RD1	Blue	35	0.20	0.40
R/RD1	Black	45	0.20	0.40
R/RD1	Red	70	0.20	0.40
R/RD1	Green	120	0.20	0.40

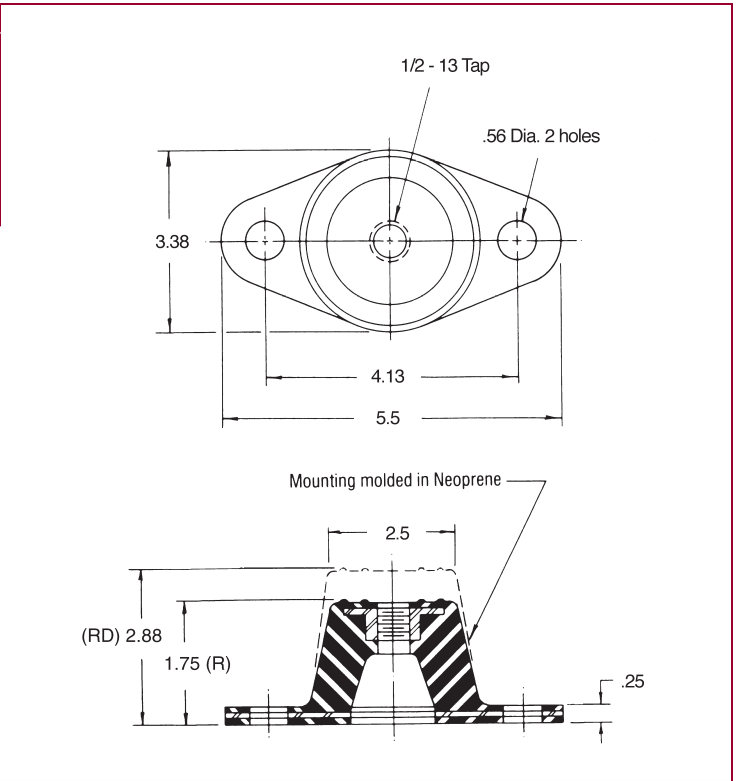
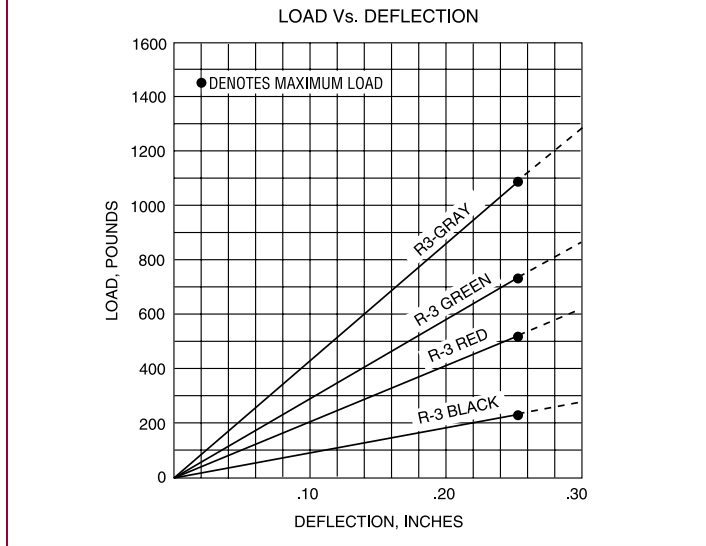


TYPE R/RD2				
MODEL #	CODE COLOR	MAX LOAD, lbs.	DEFLECTION, ins.	
			R	RD
R/RD2	Blue	135	0.25	0.50
R/RD2	Black	170	0.25	0.50
R/RD2	Red	240	0.25	0.50
R/RD2	Green	380	0.25	0.50
R/RD2	Grey	550	0.25	0.50

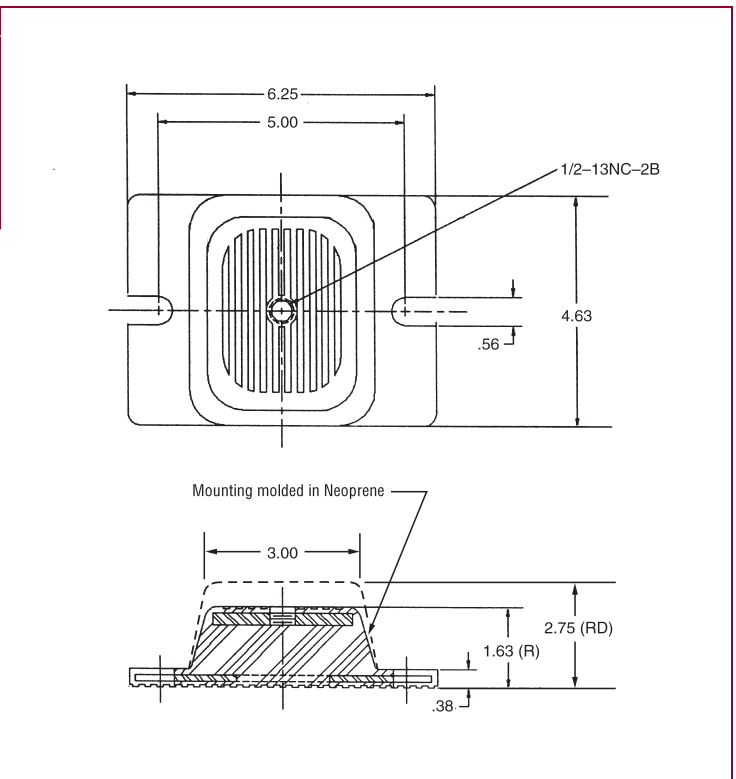
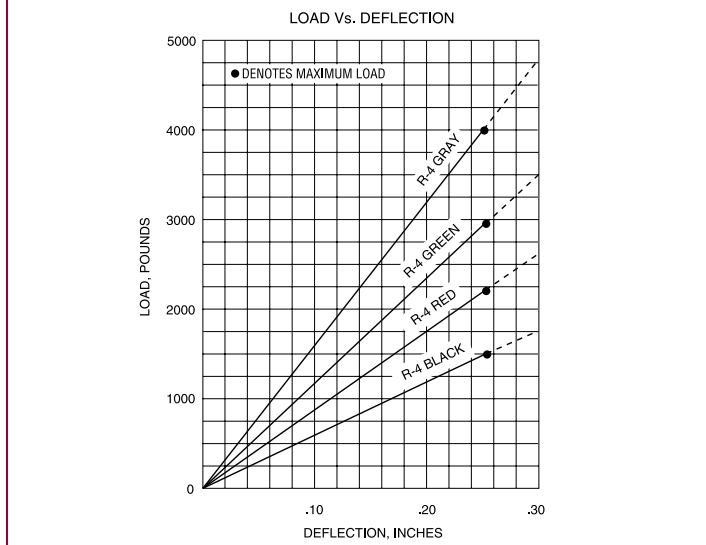


**NOTE:** VMC can mold almost any elastomer into any of its elastomer mount products. Special materials include, but are not limited to, natural rubber, Weather Resistant (WR), High Damped Silicone, Extreme High Temperature (EHT) Silicone, Nitrile and EPDM. Many of these are color coded by hardness.

TYPE R/RD3				
MODEL #	CODE COLOR	MAX LOAD, lbs.	DEFLECTION, ins.	
			R	RD
R/RD3	Black	250	0.25	0.50
R/RD3	Red	525	0.25	0.50
R/RD3	Green	750	0.25	0.50
R/RD3	Gray	1100	0.25	0.50



TYPE R/RD4				
MODEL #	CODE COLOR	MAX LOAD, lbs.	DEFLECTION, ins.	
			R	RD
R/RD4	Black	1500	0.25	0.50
R/RD4	Red	2250	0.25	0.50
R/RD4	Green	3000	0.25	0.50
R/RD4	Gray	4000	0.25	0.50



**NOTE:** VMC can mold almost any elastomer into any of its elastomer mount products. Special materials include, but are not limited to, natural rubber, Weather Resistant (WR), High Damped Silicone, Extreme High Temperature (EHT) Silicone, Nitrile and EPDM. Many of these are color coded by hardness.